

Test Report

No.: CANEC25022678914

Date: Sep 19, 2025

Page 1 of 8

Client Name: FOSHAN BLUE ROCKET ELECTRONICS CO.,LTD.

Client Address: NO.45 GUXIN ROAD,CHANCHENG DISTRICT,FOSHAN,GUANGDONG,P.R.C.

Sample Name: TO-92 Semiconductor Device

Model No.: TO-92

Client Ref. Information: TO-92LM

The above sample(s) and information were provided by the client.

SGS Job No.: GZP25-026150

Signed for and on behalf of
SGS-CSTC Standards Technical Services Co., Ltd. Guangzhou Branch

Jessie Li

Jessie-JX Li
Approved Signatory

Scan to see the report



Test Report

No.: CANEC25022678914

Date: Sep 19, 2025

Page 2 of 8

Test Result(s):

Test Part Description

SN ID	Sample No.	SGS Sample ID	Description
SN1	A7	CAN25-0226789-0001.C007	Black plastic with chip
SN2	A8	CAN25-0226789-0001.C008	Copper-colored metal with silvery surface & chip
SN3	A9	CAN25-0226789-0001.C009	Silvery metal pin

Remarks:

- (1) 1 mg/kg = 1 ppm = 0.0001%
- (2) MDL = Method Detection Limit
- (3) ND = Not Detected (< MDL)
- (4) "-" = Not Regulated

EU RoHS Directive (EU) 2015/863 amending Annex II to Directive 2011/65/EU - Lead, Mercury, Cadmium, Hexavalent chromium, Polybrominated biphenyls (PBB), Polybrominated diphenyl ethers (PBDE), Bis(2-ethylhexyl) phthalate (DEHP), Butyl benzyl phthalate (BBP), Dibutyl phthalate (DBP) and Diisobutyl phthalate (DIBP)

Test Method: With reference to IEC 62321-4:2013+AMD1:2017, IEC 62321-5:2013, IEC 62321-7-2:2017 and IEC 62321-12:2023, analysis was performed by ICP-OES/AAS, UV-Vis and GC-MS.

Test Item(s)	Limit	Unit(s)	MDL	A7
Lead (Pb)	1000	mg/kg	2	ND
Mercury (Hg)	1000	mg/kg	2	ND
Cadmium (Cd)	100	mg/kg	2	ND
Hexavalent Chromium (Cr(VI))	1000	mg/kg	8	ND
Polybrominated biphenyls (PBB)	1000	mg/kg	-	ND
Monobrominated biphenyl (MonoBB)	-	mg/kg	25	ND
Dibrominated biphenyl (DiBB)	-	mg/kg	25	ND
Tribrominated biphenyl (TriBB)	-	mg/kg	25	ND
Tetrabrominated biphenyl (TetraBB)	-	mg/kg	25	ND
Pentabrominated biphenyl (PentaBB)	-	mg/kg	25	ND
Hexabrominated biphenyl (HexaBB)	-	mg/kg	25	ND
Heptabrominated biphenyl (HeptaBB)	-	mg/kg	25	ND
Octabrominated biphenyl (OctaBB)	-	mg/kg	25	ND
Nonabrominated biphenyl (NonaBB)	-	mg/kg	25	ND
Decabrominated biphenyl (DecaBB)	-	mg/kg	25	ND
Polybrominated diphenyl ethers (PBDE)	1000	mg/kg	-	ND
Monobrominated diphenyl ether (MonoBDE)	-	mg/kg	25	ND
Dibrominated diphenyl ether (DiBDE)	-	mg/kg	25	ND
Tribrominated diphenyl ether (TriBDE)	-	mg/kg	25	ND
Tetrabrominated diphenyl ether (TetraBDE)	-	mg/kg	25	ND
Pentabrominated diphenyl ether (PentaBDE)	-	mg/kg	25	ND
Hexabrominated diphenyl ether (HexaBDE)	-	mg/kg	25	ND

Test Report

No.: CANEC25022678914

Date: Sep 19, 2025

Page 3 of 8

Test Item(s)	Limit	Unit(s)	MDL	A7
Heptabrominated diphenyl ether (HeptaBDE)	-	mg/kg	25	ND
Octabrominated diphenyl ether (OctaBDE)	-	mg/kg	25	ND
Nonabrominated diphenyl ether (NonaBDE)	-	mg/kg	25	ND
Decabrominated diphenyl ether (DecaBDE)	-	mg/kg	25	ND
Bis(2-ethylhexyl) phthalate (DEHP)	1000	mg/kg	50	ND
Butyl benzyl phthalate (BBP)	1000	mg/kg	50	ND
Dibutyl Phthalate (DBP)	1000	mg/kg	50	ND
Diisobutyl Phthalate (DIBP)	1000	mg/kg	50	ND

Notes:

- (1) The maximum permissible limit is quoted from RoHS Directive (EU) 2015/863.
- (2) IEC 62321 series is equivalent to EN 62321 series.
- (3) The restriction of DEHP, BBP, DBP and DIBP shall apply to medical devices, including in vitro medical devices, and monitoring and control instruments, including industrial monitoring and control instruments, from 22 July 2021.

EU RoHS Directive (EU) 2015/863 amending Annex II to Directive 2011/65/EU- Lead, Mercury, Cadmium and Hexavalent chromium

Test Method: With reference to IEC 62321-4:2013+AMD1:2017, IEC 62321-5:2013 and IEC 62321-7-1:2015, analysis was performed by ICP-OES/AAS and UV-Vis.

Test Item(s)	Limit	Unit(s)	MDL	A8	A9
Lead (Pb)	1000	mg/kg	2	14	11
Mercury (Hg)	1000	mg/kg	2	ND	ND
Cadmium (Cd)	100	mg/kg	2	ND	ND
Hexavalent Chromium (Cr(VI)) [®]	-	µg/cm ²	0.10	ND	ND

Notes:

- (1) The maximum permissible limit is quoted from RoHS Directive (EU) 2015/863.
- (2) IEC 62321 series is equivalent to EN 62321 series.
- (3) [®] =
 - a. The sample is positive for Cr(VI) if the Cr(VI) concentration is greater than 0.13 µg/cm². The sample coating is considered to contain Cr(VI).
 - b. The sample is negative for Cr(VI) if Cr(VI) is ND (concentration less than 0.10 µg/cm²). The coating is considered a non-Cr(VI) based coating.
 - c. The result between 0.10 µg/cm² and 0.13 µg/cm² is considered to be inconclusive-unavoidable coating variations may influence the determination.

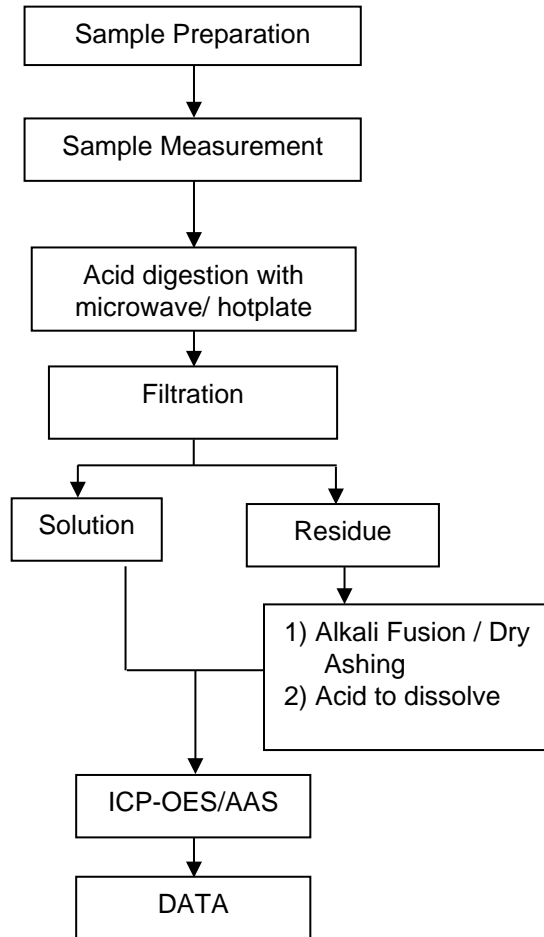
Information on storage conditions and production date of the tested sample is unavailable and thus Cr(VI) results represent status of the sample at the time of testing.

Remark: Results & photo(s) of this report refer to test report CANEC25022678913. Unless otherwise stated, the decision rule for conformity reporting is based on Binary Statement for Simple Acceptance Rule (w=0) stated in ILAC-G8:09/2019.

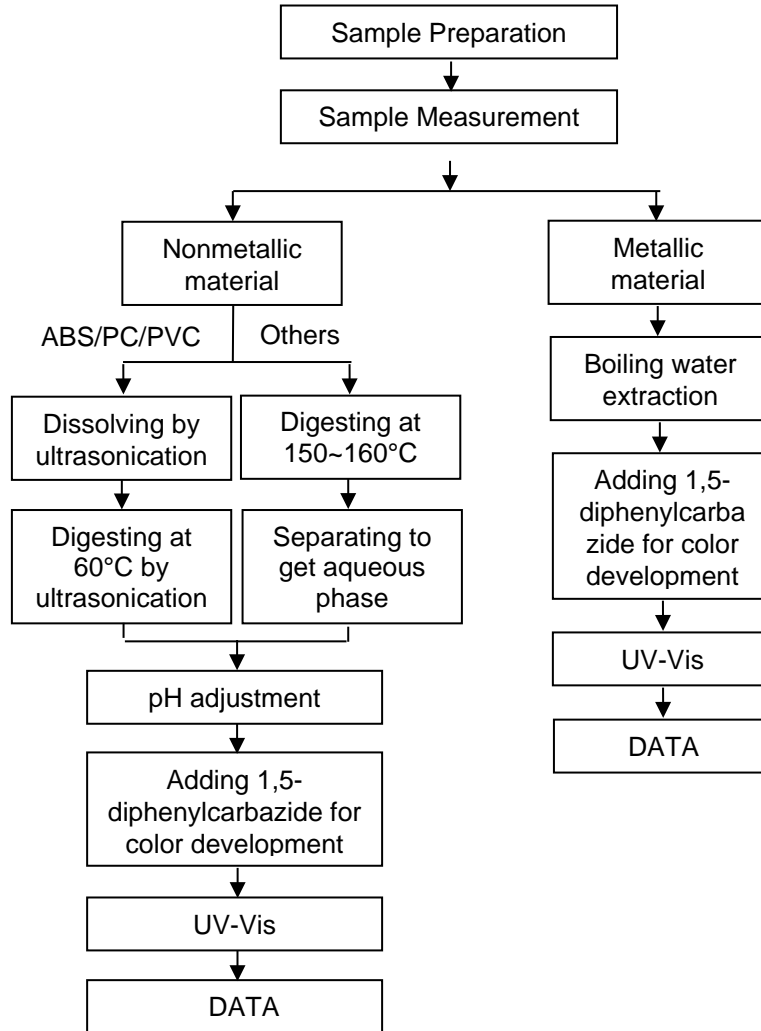


Elements Testing Flow Chart

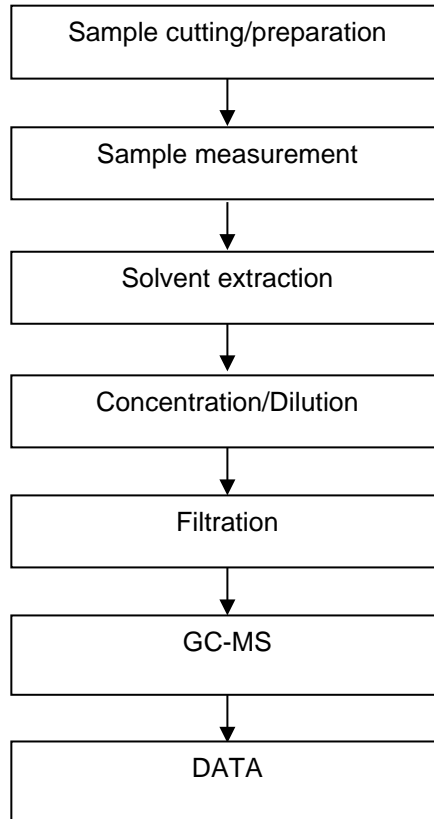
These samples were dissolved totally by pre-conditioning method according to below flow chart.



Hexavalent Chromium (Cr(VI)) Testing Flow Chart



PBB(s)/PBDE(s)/Phthalates Testing Flow Chart



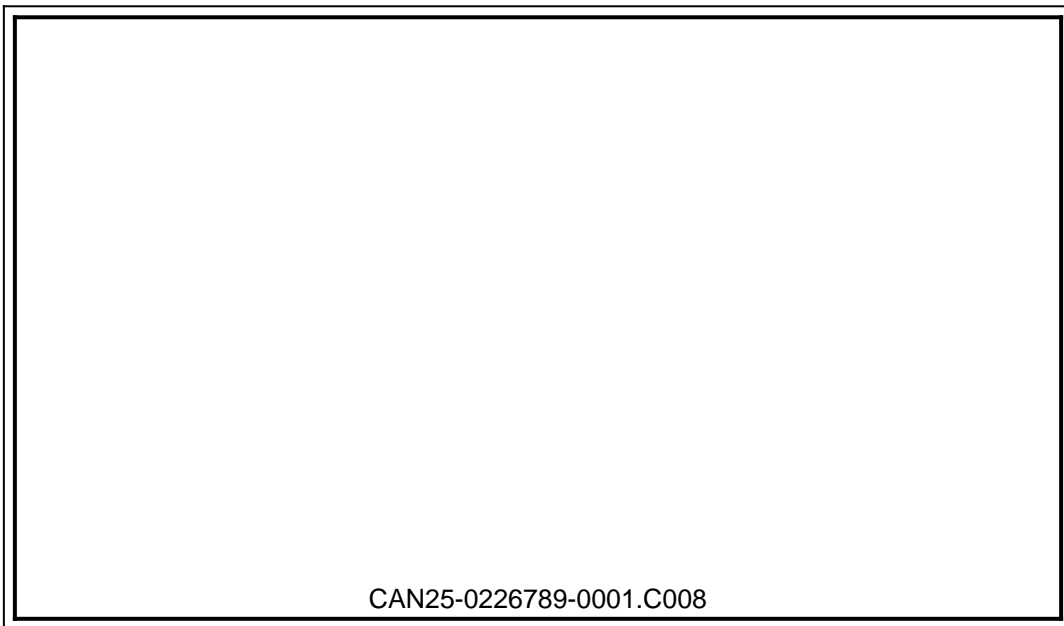
Test Report

No.: CANEC25022678914

Date: Sep 19, 2025

Page 7 of 8

Sample Photo:

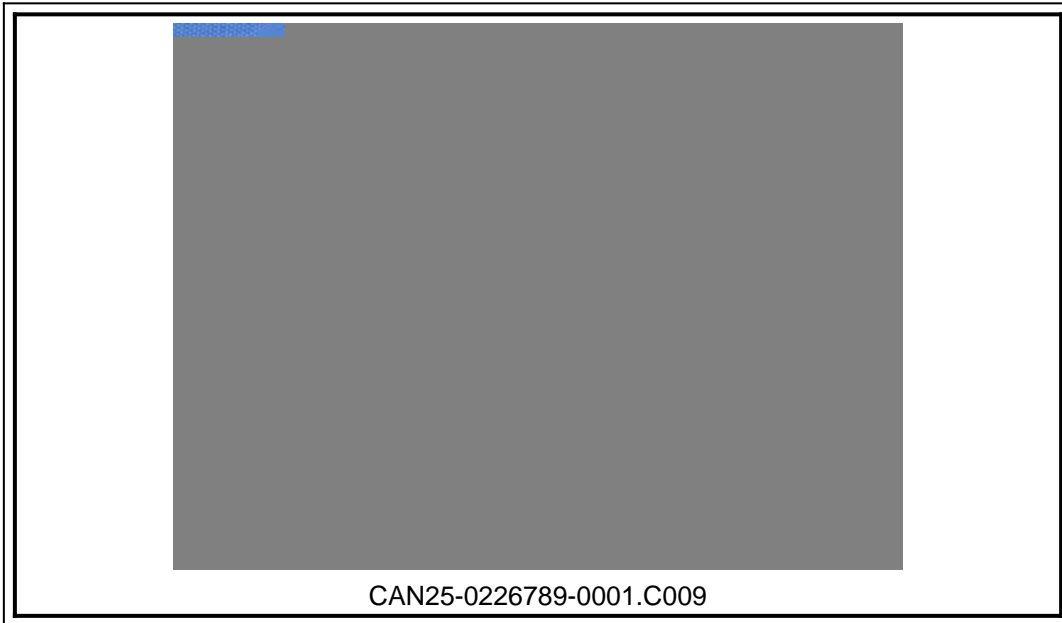


Test Report

No.: CANEC25022678914

Date: Sep 19, 2025

Page 8 of 8



SGS authenticate the photo on original report only
*** End of Report ***

